



# LUNIGIANA 2000

## real estate

**Ref. 357A**



LUNIGIANA 2000  
real estate

**Lunigiana2000 - Real Estate in Tuscany**

**Italy, 54021 Bagnone (MS) - Piazza Roma, 2 - Ph. +39 0187421400 | Mob. +39 3355383266**

**[www.lunigiana2000.com](http://www.lunigiana2000.com) - [english.info@lunigiana2000.com](mailto:english.info@lunigiana2000.com)**

## Village house



### DESCRIPTION

**Village house** with **garage** (30 meters far from the house) set at 530 metres above sea level in a lovely hamlet, just 5 kilometres from amenities.

The property, on three levels, comprises:

- Kitchen and dining room on ground floor;
- Hall, two bedrooms, toilet and shower in a **balcony** on first floor;
- Cellar and woodshed on lower ground floor.
- garage on ground floor.

**Central heating (wood burning stove)**

**Fully furnished.**

## **TECHNICAL DETAILS**

Internal surface

105 sqm

External surface

160 sqm

Noise Level

0 - very silent area

Floors

3

Rooms

4

Bedrooms

2

Bathrooms

1

Cellar

63 sqm

Garage

30 sqm

Balcony

1 sqm

Altitude a.s.l.

530

Status

Habitable

Heating

Wood Stove

Panoramic view

Yes

Furnished

Yes

## **Category**

G



**Lunigiana2000 - Real Estate in Tuscany**

**Italy, 54021 Bagnone (MS) - Piazza Roma, 2 - Ph. +39 0187421400 | Mob. +39 3355383266**

**[www.lunigiana2000.com](http://www.lunigiana2000.com) - [english.info@lunigiana2000.com](mailto:english.info@lunigiana2000.com)**

MESSAGES.PROPERTY\_IMAGES





  
LUNIGIANA2000  
real estate

**Lunigiana2000 - Real Estate in Tuscany**

**Italy, 54021 Bagnone (MS) - Piazza Roma, 2 - Ph. +39 0187421400 | Mob. +39 3355383266**  
**[www.lunigiana2000.com](http://www.lunigiana2000.com) - [english.info@lunigiana2000.com](mailto:english.info@lunigiana2000.com)**



**Lunigiana2000 - Real Estate in Tuscany**  
Italy, 54021 Bagnone (MS) - Piazza Roma, 2 - Ph. +39 0187421400 | Mob. +39 3355383266  
[www.lunigiana2000.com](http://www.lunigiana2000.com) - [english.info@lunigiana2000.com](mailto:english.info@lunigiana2000.com)



**Lunigiana2000 - Real Estate in Tuscany**

**Italy, 54021 Bagnone (MS) - Piazza Roma, 2 - Ph. +39 0187421400 | Mob. +39 3355383266**  
**[www.lunigiana2000.com](http://www.lunigiana2000.com) - [english.info@lunigiana2000.com](mailto:english.info@lunigiana2000.com)**



**Lunigiana2000 - Real Estate in Tuscany**  
**Italy, 54021 Bagnone (MS) - Piazza Roma, 2 - Ph. +39 0187421400 | Mob. +39 3355383266**  
**[www.lunigiana2000.com](http://www.lunigiana2000.com) - [english.info@lunigiana2000.com](mailto:english.info@lunigiana2000.com)**





  
**LUNIGIANA2000**  
real estate

**Lunigiana2000 - Real Estate in Tuscany**

**Italy, 54021 Bagnone (MS) - Piazza Roma, 2 - Ph. +39 0187421400 | Mob. +39 3355383266**  
**[www.lunigiana2000.com](http://www.lunigiana2000.com) - [english.info@lunigiana2000.com](mailto:english.info@lunigiana2000.com)**



**Lunigiana2000 - Real Estate in Tuscany**  
**Italy, 54021 Bagnone (MS) - Piazza Roma, 2 - Ph. +39 0187421400 | Mob. +39 3355383266**  
**[www.lunigiana2000.com](http://www.lunigiana2000.com) - [english.info@lunigiana2000.com](mailto:english.info@lunigiana2000.com)**



**Lunigiana2000 - Real Estate in Tuscany**  
**Italy, 54021 Bagnone (MS) - Piazza Roma, 2 - Ph. +39 0187421400 | Mob. +39 3355383266**  
**[www.lunigiana2000.com](http://www.lunigiana2000.com) - [english.info@lunigiana2000.com](mailto:english.info@lunigiana2000.com)**

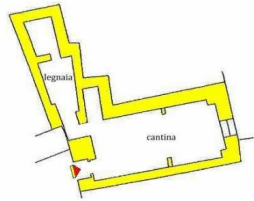




  
**LUNIGIANA2000**  
real estate

**Lunigiana2000 - Real Estate in Tuscany**

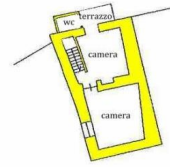
**Italy, 54021 Bagnone (MS) - Piazza Roma, 2 - Ph. +39 0187421400 | Mob. +39 3355383266**  
**[www.lunigiana2000.com](http://www.lunigiana2000.com) - [english.info@lunigiana2000.com](mailto:english.info@lunigiana2000.com)**



PIANTA PIANO SEMINTERRATO



PIANTA PIANO TERRA



PIANTA PIANO PRIMO

